



GIG
CYMRU
NHS
WALES

Partneriaeth
Cydwasaethau
Gwasanaethau Gofal Sylfaenol
Shared Services
Partnership
Primary Care Services

Electronic Transmission of Claim External Interface Specification

Version 1.1

Electronic Transmission of Claim	Version: 1.1
External Interface Specification	Date: 28 Feb 2017
EIS-Electronic Transmission of Claim	

Revision History

Date	Version	Description	Author
23 Feb 2015	0.1	First version	Shailesh
30 Nov 2015	0.2	Updated WSDL / Msg definitions	Neil Jenkins
19 Jan 2016	1.0	Updated to reflect CP system suppliers comments	Neil Jenkins
28 Feb 2017	1.1	Updated to reflect discussions at CP supplier forum meeting on 14 Feb 2017.	Neil Jenkins

Electronic Transmission of Claim	Version: 1.1
External Interface Specification	Date: 28 Feb 2017
EIS-Electronic Transmission of Claim	

Table of Contents

1.	Introduction	4
1.1	Purpose	4
1.2	Overview	4
2.	Architecture	5
2.1	Logical Architecture	5
2.2	Use Cases	5
2.3	Use Case Overview	5
2.4	Brief description of Use Cases	6
2.4.1	ETC010: Send period ETC transaction notifications	7
2.4.2	ETC020 Send period ETC control summary	9
2.5	Use Case Realisations	9
2.5.1	ETC010 Send period ETC transaction notifications	10
2.5.2	ETC020 Send End Period ETC Control Summary	11
3.	Interface Specification	12
3.1	Services	12
3.1.1	ETC Period Transaction Notification Service	12
3.1.2	ETC Period Control Summary Service	12
3.2	Examples	Error! Bookmark not defined.
3.2.1	ETC Period Transaction Notification	Error! Bookmark not defined.
3.2.2	ETC Period Control Summary	Error! Bookmark not defined.
3.3	SOAP UI project	Error! Bookmark not defined.
3.3.1	Period Transaction Notifications	Error! Bookmark not defined.
3.3.2	Period Control Summary	Error! Bookmark not defined.

Electronic Transmission of Claim	Version: 1.1
External Interface Specification	Date: 28 Feb 2017
EIS-Electronic Transmission of Claim	

1. Introduction

1.1 Purpose

The purpose of this document is to provide PMR systems (non-NHS) with a specification that can be used to transfer the dispensed prescription transaction and control summary transaction for a specific period using the NWIS hosted ETC Services within data centre.

1.2 Overview

The Electronic Transmission of Claim Service (ETC) enables PMR applications suppliers to send the fully dispensed prescription transaction and control summary for a patients comprising dispensed medication details for a specified period.

The service is based on the customised message format defined by the NWSSP which is prescription payment authority within NHS Wales for its consumption. Consumers of the service will create SOAP/XML message over secured connection to NHS Wales's hosted ETC service which then will be retrieved by NWSSP service over a regular interview for reconciliation with paper records for payment.

Note there is no implementation of the HL 7 message for prescription claims in Wales

Electronic Transmission of Claim	Version: 1.1
External Interface Specification	Date: 28 Feb 2017
EIS-Electronic Transmission of Claim	

2. Architecture

2.1 Logical Architecture

The following diagram illustrates the architecture.

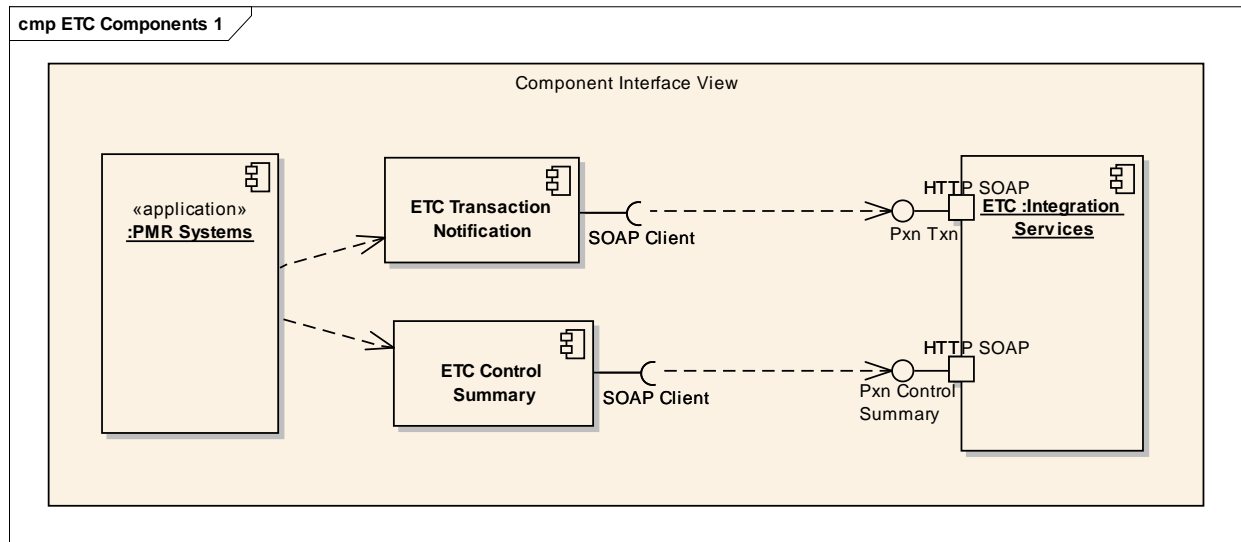


Figure 1 Component Interfaces

ETC Transaction Notification and Control Summary

2.2 Use Cases

2.3 Use Case Overview

Electronic Transmission of Claim	Version: 1.1
External Interface Specification	Date: 28 Feb 2017
EIS-Electronic Transmission of Claim	

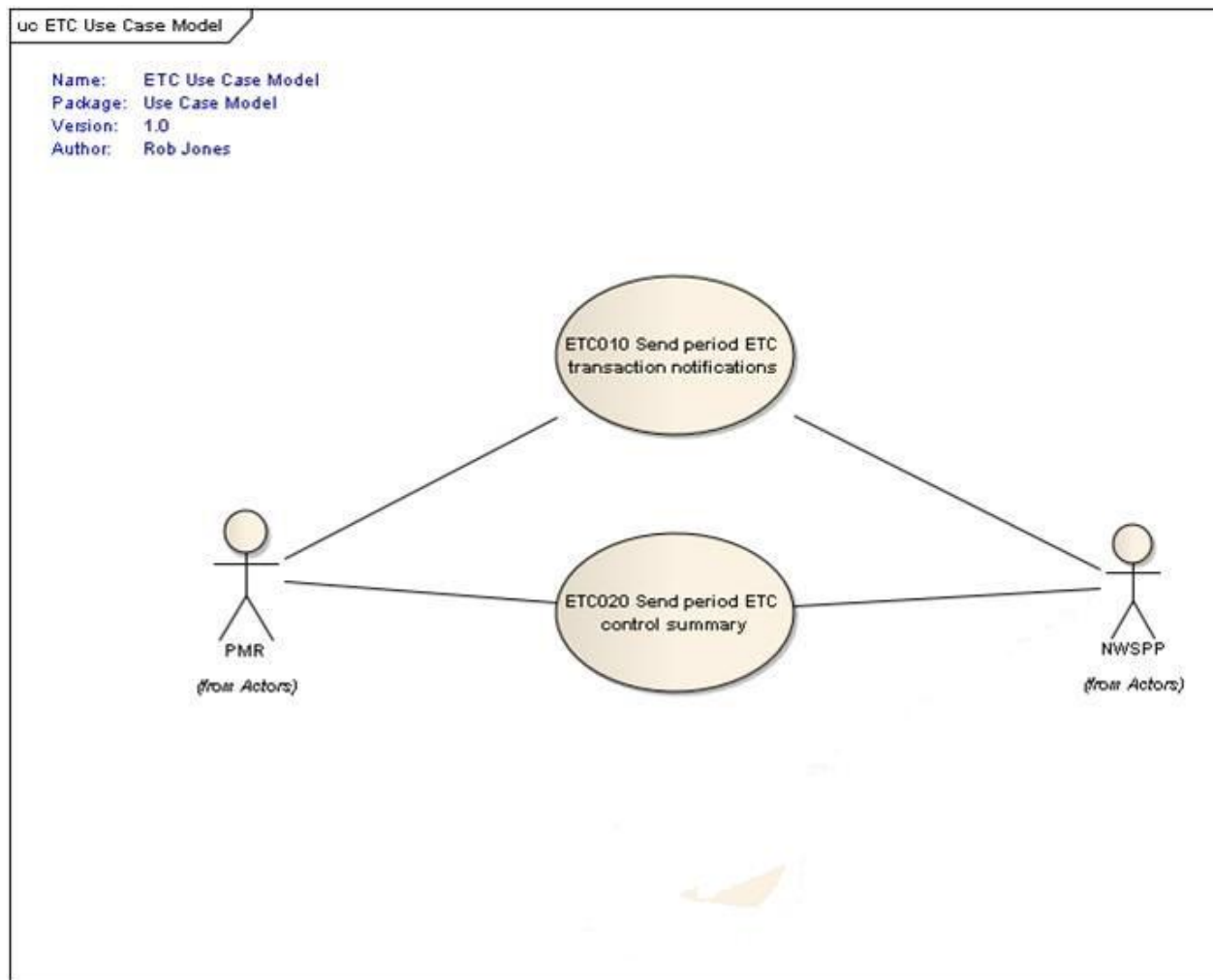


Figure 2: Use Case Overview

2.4 Brief description of Use Cases

The functional requirements of the system to be developed by CP system suppliers are described more fully in this section as 'use cases'.

Each use case presumes the following pre-conditions, from a user's perspective:

1. The user is authenticated and authorised to use the application;
2. The user is authorised to operate this use case;
3. A Data Access Component is installed and configured for use within the Pharmacy Software System environment.

Electronic Transmission of Claim	Version: 1.1
External Interface Specification	Date: 28 Feb 2017
EIS-Electronic Transmission of Claim	

2.4.1 ETC010: Send Dispensed Claim Message

The following tables describe the activities required by the user for the generation and transmission of Dispensed Claim Messages.

Use Case ID	Description	Additional Comments
ETC010 – Send Period ETC Transaction Notifications		
010.001	Gather Claim Data	<p>Claim data should be generated in accordance with the requirements set out in the ETC Message Requirements Register.</p> <p>Where a discrepancy exists, NWSSP will employ existing electronic/manual interventions around non-payment (e.g. e>Returns).</p>
010.002	Generate Claim File	<p>This use case allows the user to generate a Payment Claim File for submission to NWSSP for payment.</p> <p>In this process the following steps are assumed:</p> <ol style="list-style-type: none"> User selects the 'Submit Payment Claim' action; All prescription claim records previously gathered for payment are rendered as XML conforming to the XML Schema Specification as described in the ETC Message Requirements Register; The XML data is saved as a claim file onto the PMR system, for onward transmission
010.003	Connection to the ETC Web Service	<p>In this use case, the selected Claim File(s) must be transmitted electronically from the local PMR system to the NHS Wales ETC Web Service Receiver.</p> <ol style="list-style-type: none"> The PMR must first check for an NHS Wales intranet connection Once discovered, a connection will be made to the NHS Wales ETC Web Service Receiver end point. The ETC endpoint will authenticate according to the IP address of the submitting system.

Electronic Transmission of Claim	Version: 1.1
External Interface Specification	Date: 28 Feb 2017
EIS-Electronic Transmission of Claim	

010.004	Submit Dispensed Claim	<p>The generated dispensed claim is ready for transmission.</p> <p>This use case describes the process of submitting the claim to NHS Wales for processing and pricing.</p> <ol style="list-style-type: none"> The dispensed claim submission action is initiated. The Dispensed Claim Message is transmitted. Stored dispensed claim messages are submitted sequentially. The NHS Wales ETC Web Service receives the file and returns an acknowledgement value as described in the ETC Message Requirements register. The PMR receives the acknowledgement message.
010.004a	Dispensed Claim V01 rejection	V01 rejection message indicates invalid XML data accompanied by a description of the invalid content. Content should be amended and Dispensed Claim message resubmitted.
010.004b	Dispensed Claim V02 rejection	V02 rejection message indicates an invalid Dispensing Org ID. Content should be amended and Dispensed Claim message resubmitted.
010.004c	Dispensed Claim V03 rejection	V03 rejection message indicates that the ETC Web Service is unable to write the dispensed claim message to the message store. The PMR should queue the message and resubmit.
010.004d	Amend Dispensed Claim	This use case is included as a placeholder for CP initiated amendment to a dispensed claim message. Final requirements are subject to discussion between NHS Wales and PMR system suppliers.
010.004e	Recall Dispensed Claim	This use case is included as a placeholder for CP initiated recall of a dispensed claim message. Final requirements are subject to discussion between NHS Wales and PMR system suppliers.
010.005	Disconnection from the ETC Web Service	Following successful submission the PMR system will disconnect from the ETC Web Service.

Electronic Transmission of Claim	Version: 1.1
External Interface Specification	Date: 28 Feb 2017
EIS-Electronic Transmission of Claim	

2.4.2 ETC020 Send Claim Submission

The following table illustrates the requirements for transmitting an electronic ETC control summary enables a reconciliation to occur between the claims sent by the PMR system and the claims received by the web service.

Use Case ID	Description	Additional Comments
ETC020 – Send Period ETC Control Summary		
020.001	Control Summary	<p>The control summary record is a control document that enables a reconciliation to occur between the claims sent by the PMR system and the claims received by the web service.</p> <p>The control summary must contain the information stated in the claim submission definition.</p> <p>Subject to discussion between PMR system suppliers and NHS Wales it is proposed that this is a once daily submission to be received by midnight each day.</p>

2.5 Use Case Realisations

The sequence diagrams in 2.5.1 and 2.5.2 show the simple message based interactions with the main architecture components identified in 2.1 above

Electronic Transmission of Claim	Version: 1.1
External Interface Specification	Date: 28 Feb 2017
EIS-Electronic Transmission of Claim	

2.5.1 *ETC010 Send period ETC transaction notifications*

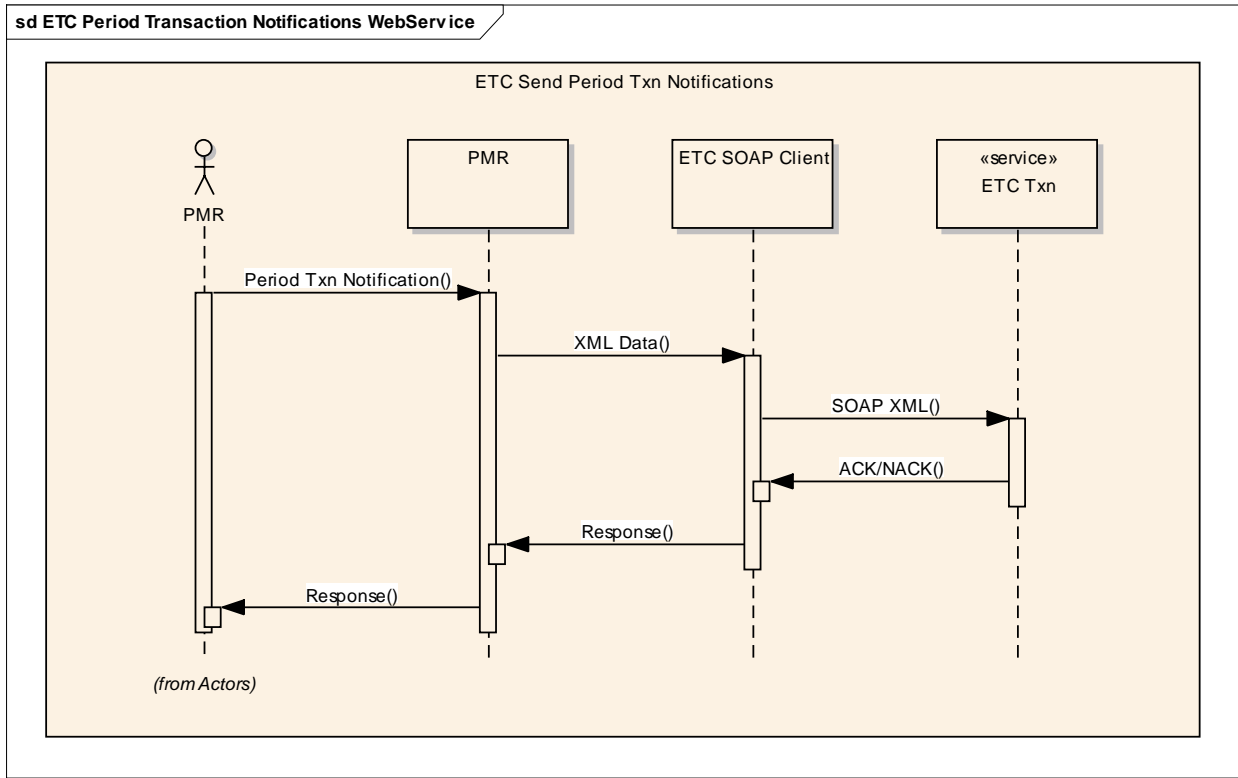


Figure 3: ETC010 Send period ETC transaction notifications realisation

Electronic Transmission of Claim	Version: 1.1
External Interface Specification	Date: 28 Feb 2017
EIS-Electronic Transmission of Claim	

2.5.2 *ETC020 Send End Period ETC Control Summary*

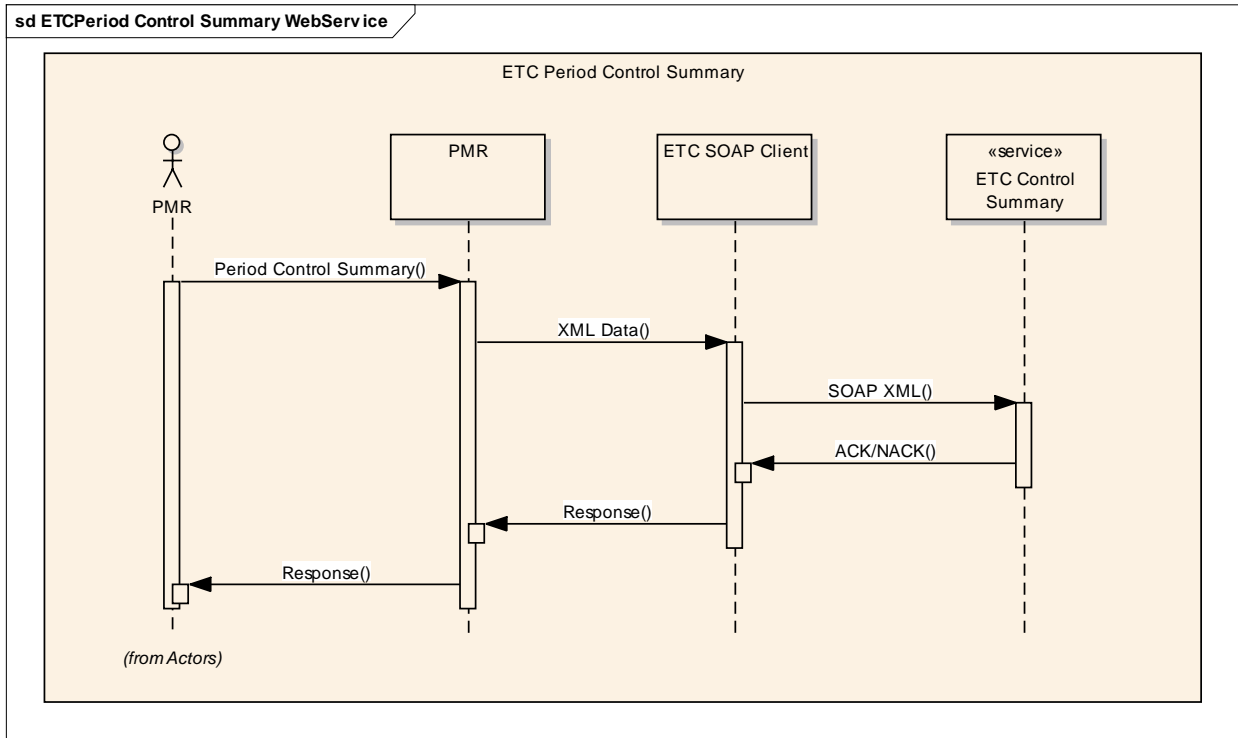


Figure 4: ETC020 Send End Period ETC Control Summary

Electronic Transmission of Claim	Version: 1.1
External Interface Specification	Date: 28 Feb 2017
EIS-Electronic Transmission of Claim	

3. Interface Specification

3.1 Services

3.1.1 ETC Dispensed Claim Notification Service

This is the SOAP HTTP web service.

3.1.1.1 Request Message structure



ETC_DispensedClaim
_Xsd.xsd

Live: <http://etc.wales.nhs.uk>

Test: <http://etctest.wales.nhs.uk>

3.1.1.2 Response Message

Live: <http://etc.wales.nhs.uk>

Test: <http://etctest.wales.nhs.uk>

3.1.2 ETC Claim Submission Service

This is the SOAP HTTP web service.

3.1.2.1 Request Message Structure

Live: <http://etc.wales.nhs.uk>

Test: <http://etctest.wales.nhs.uk>

3.1.2.2 Response Message

Live: <http://etc.wales.nhs.uk>

Test: <http://etctest.wales.nhs.uk>